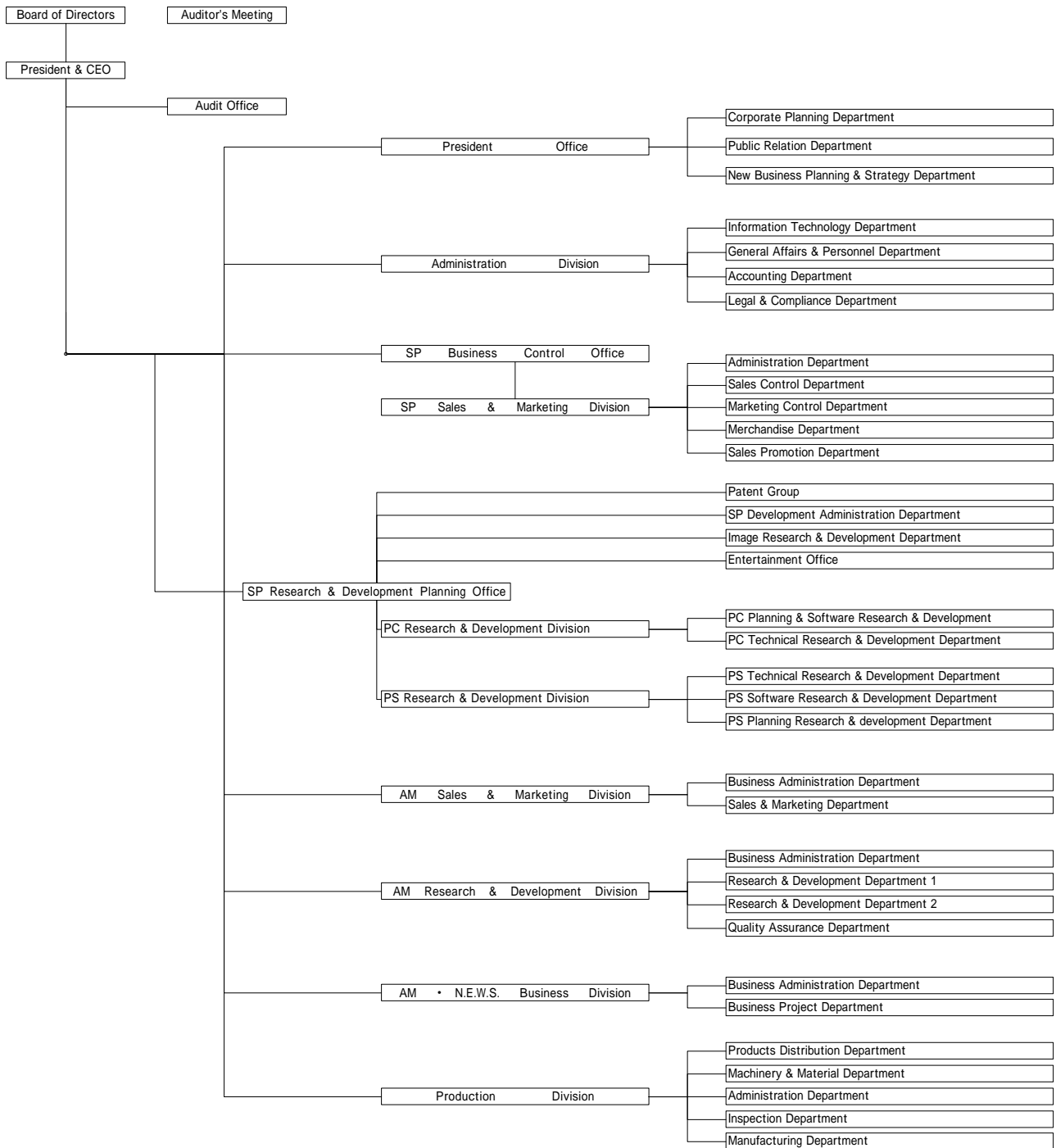


Sammy Corporation Organization Chart

As of April 1, 2002



Sammy Corporation posts the Report and Release Information on this Investor's Guide, our internet IR site, aiming to facilitate timely disclosure of information to its stockholders, investors, customers, etc. This Report and Release Information may contain important information, defined in the Japanese Securities and Exchange Law, concerning the business of the Company. In case that a person who receives such information by viewing this Investor's Guide conducts any sale, purchase or other certain transactions designated under the Law in respect of stock or other certain securities or instruments issued by the Company, until 12 hours pass from the time when such information was disclosed to the designated media, such conducts may be deemed to be violation of the Law.